



KONICA MINOLTA

PagePro **1380MF** and PagePro **1390MF**
All-in-One series

Compact and multifunctional:
combining print, scan, copy
and fax in one single unit



REVOLUTION IN LASER PRINTING



KONICA MINOLTA



Professional, streamlined businesses are all about efficiency. This is where the PagePro 1300MF All-in-One series comes in. Combining monochrome laser printing, copying, colour scanning to your PC and faxing into one unit, they do away with the need for four separate machines, bringing cost-effectiveness and productivity to any home office or small to medium-sized business.

Four functions, one low cost

Buying one machine costs less than buying four individual ones, so PagePro 1300MF All-in-Ones make a very welcome difference to your expenditure. Long-lasting consumables help keep spending down in the long run too. Moreover, less space is taken up in the busy home office or small business.

The power and flexibility you need

With output at 20 pages per minute, PagePro 1300MF All-in-Ones speed through your printing jobs in no time. First page-out time is just 19 seconds, while powerful processing means pages are printed fast without compromising print quality. The PagePro 1390MF standard 50-sheet automatic document feeder handles 1-to-1 copies at 20 pages per minute. Add 6 page-per-minute flatbed scanning, and these are machines with time and cost-saving at their heart.



PagePro 1380MF and PagePro 1390MF All-in-One series



Easy to set up, easy to use

The PagePro 1300MF All-in-Ones feature intuitive control panels, easily-replaceable consumables and high-capacity 250-sheet paper trays. They come complete with the LinkMagic software that lets you scan and copy directly from your PC, while ease of use and reliability mean they can be left to do their job without you having to oversee them.



Keeping quality high

Superb quality is a stand-out feature of the PagePro 1300MF All-in-One series. Scanning at 1200 dpi in colour, scans are beautifully detailed. Whether you're printing, copying or scanning, the results are always ultra-professional.

More features, more benefits

Time-saving functions bring new levels of convenience and versatility to the PagePro 1300MF All-in-One series.

Scanning

Scan to e-mail

Scan a page or document directly into your e-mail application as a standard attachment.

Scan to file

Scan an image and save it to any directory on your hard disk.

Scan to application

Scan a page or document and save it straight to an application such as Word®, Excel®, Powerpoint®, Acrobat®, Photoshop® etc.



Copying

Electronic sorting

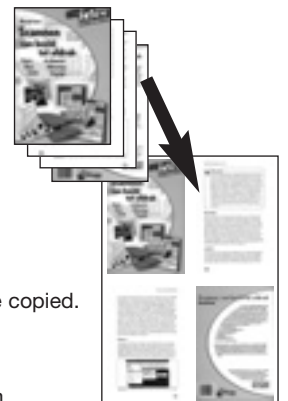
By letting you sort and collate multiple copies, electronic sorting makes tricky tasks easy.

N in 1 copying/printing

N in 1 lets you put multiple scans on a single document. For example, you can scan a 4-page brochure and print it out as a one-page document.

Copy mode

This function improves the quality of copies. Three settings are available (mixed, photo and text) depending on the original to be copied.



Faxing

The PagePro 1390MF features high speed 33.6 kbps fax modem, one-touch dial and speed dial-saving you time when it comes to sending faxes to frequently-dialled numbers.

PagePro 1300MF All-in-Ones at a glance

- Up to 20 ppm printing and copying
- First page out: less than 19 seconds
- 600 x 600 dpi print resolution
- 1200 dpi scan resolution in full colour
- Windows® compatible
- USB 2.0 (High-Speed) interface
- 250-sheet multi-purpose tray



KONICA MINOLTA

PagePro 1380MF and PagePro 1390MF All-in-One series

TECHNICAL DATA

Hardware and software capabilities

Processor type: 150 MHz
Memory: 32 MB (1380MF), 48 MB (1390MF)
Emulation: Windows Printing System (GDI)
Monthly duty cycle: 15,000 sheets

Paper handling

Paper sizes supported:
A4, A5, folio (A4 Plus), statement, letter, letter plus, UK Quatro 8x10", executive, B5(JIS), B5(SO), foolscap, legal, postcard, double postcard, Govt legal, Govt letter, envelope DL, monarch, C5, C6, Japanese chou 3, Japanese chou 4, Chinese Kai 16, Chinese Kai 32.
Paper weights: plain paper: 60 – 90 g/m², thick stock: 90 – 163 g/m²
Print media: plain paper, recycled paper, thick stock, OHP transparencies, envelopes and Japanese post office standard postcards

Software compatibility

Windows® 98SE / Me / 2000 / XP

Physical

Type: Laser printer with internal controller
Dimensions: (W x D x H)
PagePro 1380MF: 492 x 465 x 369 mm
PagePro 1390MF: 492 x 465 x 547 mm
Weight: with consumables: <12.8Kg (1380MF), <14.2Kg (1390MF)
without consumables: <11.8Kg (1380MF), <13.2Kg (1390MF)

Electrical

Power requirements: 220/240V Model: 220/240 VAC ±10%, 50/60 ±3% Hz
Power Consumption:
Operating <900W
Standby <80W
Powersaving <15W
Energy Star Compliant*

Environmental

Temperature Requirements: Operating: 10° to 35° C
Non-Operating: 0° to 35°
Humidity: Operating: 15% to 85% RH
Non-Operating: 10% to 85% RH
Noise Levels: Operating: <58 dB(A); Standby <45dB(A)

Regulatory/Safety conformity

UL, cUL, FCC-B, DOC, VCCI, CE Marking, C-Tick, CDRH

Consumables¹

Printer ships with toner cartridge 1,500 pages; OPC drum cartridge 20,000 pages.
Replacement consumables:
Toner: high capacity 6,000 pages; standard capacity 3,000 pages
Drum: OPC drum cartridge 20,000 pages

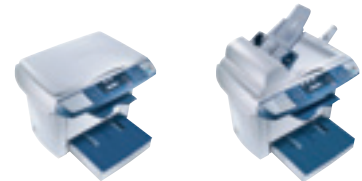
Warranty period and conditions

1 year warranty (within EU; local law applies)

¹ The stated life expectancy of each consumable in your printer is based on printing under specific operating conditions such as page coverage for a particular page size (5% coverage of A4). The actual consumables life will vary depending on the use and other printing variables including page coverage, page size, media type, continuous or intermittent printing, ambient temperature and humidity.

*The addition of some options, in some combinations may cause the product to become non-compliant. Energy Star compliance does not represent an EPA endorsement of any product or service.

Specifications and accessories are based on the information available at the time of printing, and are subject to change without notice. For the latest information, please visit printer.konicaminolta.com



	PagePro 1380MF	PagePro 1390MF
Print		
Print speed	20 ppm	20 ppm
First page out	19 sec.	19 sec.
Warm-up time	21 sec.	21 sec.
Print resolution	600 dpi	600 dpi, 1200 dpi class
Interface	USB 2.0 (High-Speed)	USB 2.0 (High-Speed)
Scan		
Scan resolution (colour)	1200 dpi	1200 dpi
Colour depth	24 bits	24 bits
TWAIN driver	Yes	Yes
Copy		
Copy speed (continuous)	20 cpm	20 cpm
Copy speed (1-to-1)	15 cpm (with ADF)	20 cpm
First copy out	19 sec.	19 sec.
Copy resolution	600 dpi	600 dpi
Maximum copies	99	99
Zoom range	25 to 400%	25 to 400%
Fax		
Speed	n/a	33.6 kbps
One touch dial	n/a	Yes (12)
Speed dial	n/a	Yes (100)
Paper handling		
Paper input	250 sheets	250 sheets
Paper output	100 sheets	100 sheets
Automatic document feeder input	50 sheets (optional)	50 sheets (standard)

Dealer address

©2005 KONICA MINOLTA All rights reserved. Specifications are subject to change without notice. The KONICA MINOLTA logo, PagePro and Fine ART™ are trademarks or registered trademarks of KONICA MINOLTA. All other trademarks or registered trademarks are the property of their respective owners.

Websites:
printer.konicaminolta.com
www.q-shop.com

Part Number: 1730978-001



Belgium and Luxembourg
Tel: (+32) 2 479 64 23
Fax: (+32) 2 479 97 42

France
Tel: (+33) 01 41 07 93 93
Fax: (+33) 01 40 83 01 10

Middle East
Tel: (+97) 1 4 335 2574
Fax: (+97) 1 4 335 2573

Spain
Tel: (+34) 91 327 73 00
Fax: (+34) 91 327 09 00

The Netherlands
Tel: (+31) 30 248 1200
Fax: (+31) 30 248 1211

For all other countries
Konica Minolta
Printing Solutions
Europe B.V.
Tel: (+31) 30 248 1200

Denmark
Tel: (+45) 72 21 21 21
Fax: (+45) 72 21 21 22

Germany and Austria
Tel: (+49) 89 63 02 67 0
Fax: (+49) 89 63 02 67 67

Norway
Tel: (+47) 2 27 89 800
Fax: (+47) 2 27 89 850

Sweden
Tel: (+46) 8 622 51 00
Fax: (+46) 8 622 51 24

United Kingdom and Ireland
Tel: (+44) 1784 442255
Fax: (+44) 1784 461641

Finland
Tel: (+358) 9 4 20 61
Fax: (+358) 9 4 20 62 00

Italy
Tel: (+39) 02 39 011 1
Fax: (+39) 02 39 011 219

Portugal
Tel: (+351) 219 428 900
Fax: (+351) 219 428 909

Switzerland
Tel: (+41) 43 322 90 20
Fax: (+41) 43 322 90 29