

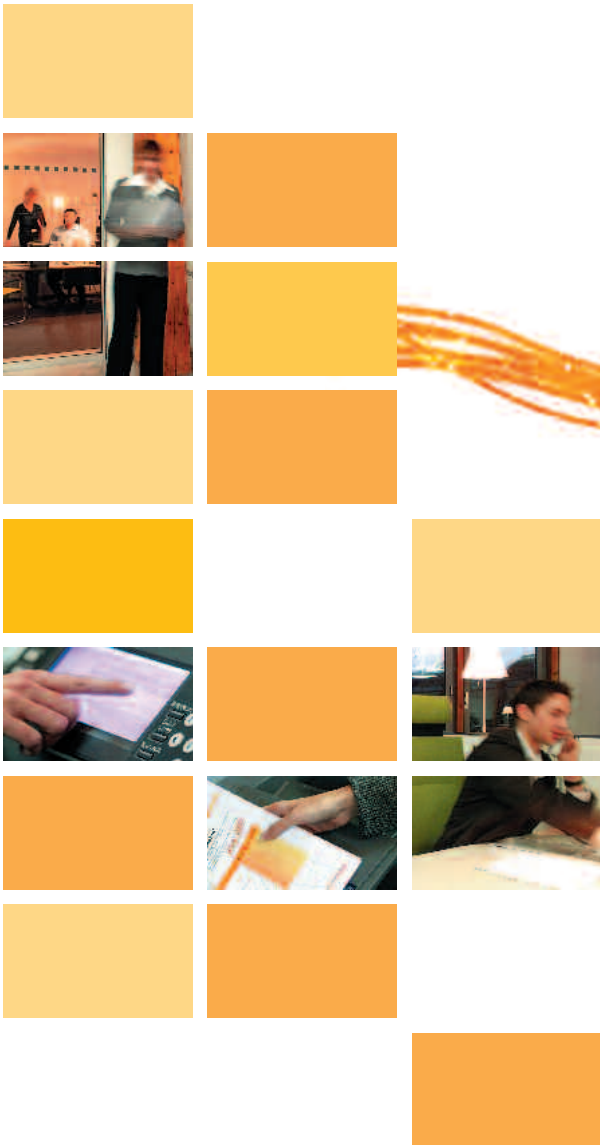


KONICA MINOLTA

Office System bizhub C250



**bizhub C250**  
Business matters





# More for **your business**

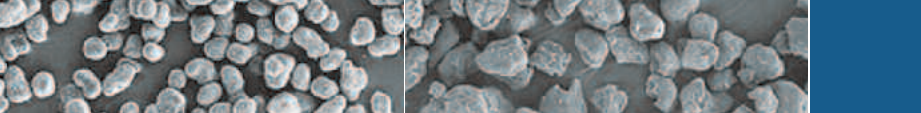
Success in business requires a competitive edge. You have to be more efficient, more reliable, more flexible and more productive than the rest.

Although it only takes up less than half a square metre of floor space, Konica Minolta's new bizhub C250 can do more for you than you might expect. It produces high-quality, cost-effective colour and black-and-white prints, but that's not all it can do.

The multifunctional bizhub C250 combines copy, print, scan and fax functions in a single, compact device that not only increases efficiency, productivity and flexibility but also satisfies all modern office communication needs.

**bizhub C250** 





Simitri™ polymerised toner

Conventional toner



## ➔ Quality matters – the price, too

Quality has its price. But why pay more? The bizhub C250 reduces print costs and improves imaging thanks to Simitri™, Konica Minolta's innovative polymerised toner. Its oil-free, extra-fine particles produce sharp black-and-white texts and bright, colourful matt or glossy illustrations.

The bizhub C250 is equipped with a high-precision print engine comprising four separate imaging units for two reasons: speed and image accuracy.

Thanks to single-pass technology, both colour and black-and-white prints can be quickly produced at a rate of 25 pages per minute. Each imaging unit is equipped with a dual-beam laser device for higher precision and better stability. And because every colour is created independently, additional movable mirrors are not necessary.

# More functions for more convenience

The new bizhub C250 is a versatile multifunctional device with unprecedented performance capabilities. Its features are designed to simplify operations, improve workflow, and increase productivity.

- Our unique Emperon™ print controller enables the bizhub C250 to offer comprehensive printing functionality with PCL 6c and PostScript 3 as standard. Emperon's™ intuitive interface ensures fast and easy settings, even for complex print jobs. EasySet facilitates network configurations that can also be transferred to other bizhub users.



- Emperon™ also features such highlights as mixplex which combine single and double-sided pages in one job, as well as the convenience of PC faxing with the fax option. And because the Emperon™ controller can process one job while the engine prints the previous one, the bizhub C250 always delivers your print jobs at maximum speed.
- The large touch screen makes the bizhub C250 easy to operate and it also encompasses automatic features such as paper size recognition, paper tray selection, colour and black-and-white recognition, auto size zooming and auto switching from an empty to a full paper tray. All you have to do is position your originals and hit the start key.
- Additional useful features are also available to meet your specific needs. With Image Repeat, for example, you can quickly and easily produce multiple business cards on an A4 sheet. Or use N-up to copy more than one original onto a page in order to save paper.
- As opposed to desktop scanning, you can scan whole documents in one shot via the optional document feeder and eMail them or send them to your PC, network server or Personal Box. You can choose between PDF or Compact PDF for the quick and easy mailing of large documents, and images can also be scanned to JPEGs for your next presentation.
- Up to 2,100 eMail, FTP and SMB addresses can be easily accessed from the C250's memory for easy use. And thanks to its LDAP support, you can directly access your company's eMail database. Yet another convenience: if the same scan job is used regularly, save your settings and all destinations under a one-touch button.



- Many businesses rely on faxes to distribute documents that are only available on paper. The bizhub C250 can be upgraded with an innovate Super G3 fax featuring confidential fax transmission and receipt, polling for fax on call, digital fax receipt and image download. You can also automatically redirect faxes to where you need them or re-route faxes from certain senders to a specified Personal Box.
- Konica Minolta's Personal Box extends the scope of the bizhub C250 beyond that of a multifunction device. Up to 1,000 Personal and Public Boxes can be set up on the standard 40 GB hard drive that resemble PC folders. Each box can combine copy and print jobs for fast reprinting without additional processing, scan files for downloading and transmission inside or outside your company, and fax documents for archiving or rerouting. Public Boxes facilitate the sharing of information and provide access to frequently needed files (such as forms). Personal Boxes require an access code that makes it easy to manage confidential files and keep them secure.
- Cost transparency and cost allocation are important office communication issues and the bizhub C250 offers two effective cost control and management utilities: the comprehensive cost-centre management system counts all the pages produced by individual users or departments and facilitates the cost allocation to specified profit centres. With the PageScope Data Administrator, this system can be completely set-up via the network.
- The User Authentication feature enables you to specify up to 1,000 users for individual access to any or all of the device's functions as well as to black-and-white and colour jobs. The allocation of limited output volumes to individual users or groups is also possible. If you want to operate more than one bizhub C250 or your staff exceeds 1,000 employees, simply hook them up to the Windows Active Directory server and make user access to all devices even more convenient by adopting PC usernames and passwords.



# More finishing options for more expert results

Print quality alone does not yet make a professional document – finishing also counts. The bizhub C250 not only provides your office with versatile finishing capabilities but also includes effective paper handling functions.

The bizhub C250's range of finishing options includes corner stapling, book stapling (two staples on the left), 4-hole punching and booklet finishing for the automatic production of centre-stapled and folded booklets. Combine any of these features with the mixed media function – which lets you specify different paper sources for individual pages within one job – and your professional documentation will make an impact every time! Produce for example the next report with chapter dividers; add high-quality covers to your product information; or create your own sales brochures with the booklet function.

The bizhub C250's automatic duplex unit processes print media of up to 256 g/m<sup>2</sup> – a unique feature for a multifunctional device in this class! You can now print your own high-quality covers, postcards for mailings, or professional double-sided business cards, and anything else that requires heavy paper for a perfect finish.

To support this feature, both the first tray and the bypass allow direct feeding up to 256 g/m<sup>2</sup>. You can also print your logo or latest slogan on envelopes to give your mailings that extra-professional touch! OHP films and address labels, logo stickers and other special media can all be fed directly from these two trays.

Forget about single-function desktop devices that restrict performance and versatility. Centralise your office communication and give your workgroup, team or office access to the wide range of functions included in the compact bizhub C250. A truly multifunctional device that's much more than just a copier, printer, scanner and fax!



combined mixmedia/mixplex



four-hole punching



booklet maker (folding and stapling)



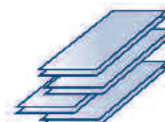
duplex printing



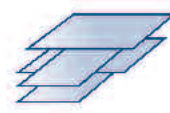
stapling



top left corner stapling



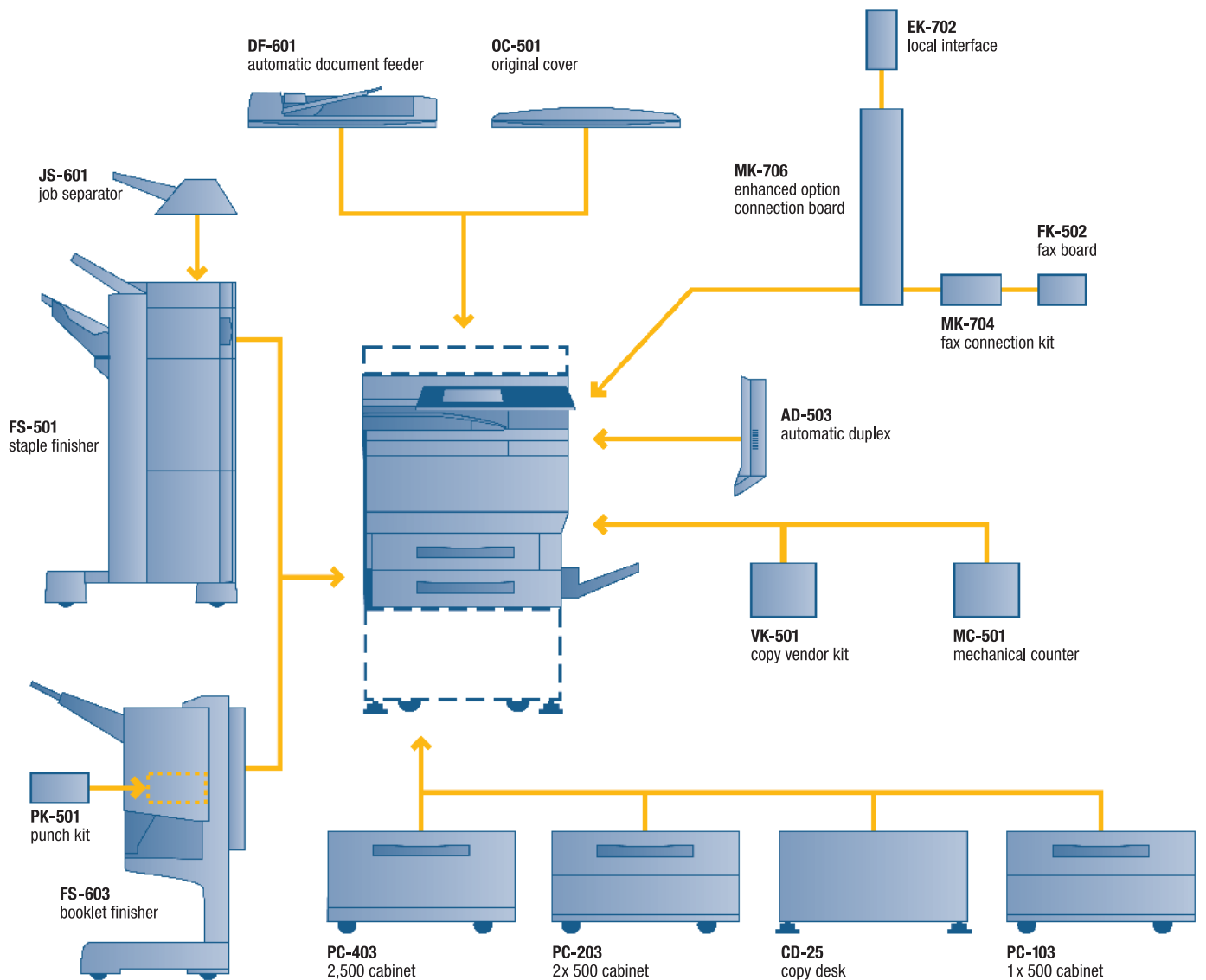
offset sorting



criss-cross sorting



# Your optional features





KONICA MINOLTA

Simitri



## Technical specifications

### Copier specification

#### Copying system

Tandem type  
Indirect electrophotographic  
4x Dualbeam laser engine

#### Toner system

Simitri™ polymerised toner

#### Copy/print speed A4

Colour up to 25 cpm  
Mono up to 25 cpm

#### Copy/print speed A3

Colour up to 13 cpm  
Mono up to 13 cpm

#### 1st copy/print time

Colour 11.7 sec. (A4)  
Mono 8.4 sec. (A4)

#### Warm-up time

Less than 110 sec.  
(Timer function)

#### Copy resolution

600 x 600 dpi

#### Gradation

256 gradations

#### Multicopy

1–999, interruption mode

#### Copy original format

A5–A3

#### Magnification

25–400%, in 0.1% steps

#### Copy features

Chapter and cover mode,  
proof copy, adjustment test print,  
glossy mode, colour adjustment,  
digital art, job recall,  
job setting memory

### Printer specification

#### Print resolution

Max. 600 x 1,800 dpi

#### Controller CPU

PowerPC 750FX @ 466 MHz

#### Page description language

PCL 6c (PCL 5c + XL 2.1)  
PostScript 3

### Operating systems

Windows 98/ME/NT4.0/2000/XP  
Macintosh 9.x/10.x  
Server NT4.0/2000/2003  
Unix, Citrix

### Interface

10/100-Base-T Ethernet  
USB 2.0 (optional)  
IEEE 1284 (optional)

### Scan specification

#### Scan speed

Up to 25 scans/min (A4)

#### Scan resolution

Max. 600 x 600 dpi

#### Scan modes

TWAIN scan  
Scan-to-eMail  
Scan-to-FTP  
Scan-to-SMB  
Scan-to-Box  
Scan-to-iFax

#### File formats

JPEG, TIFF, PDF, Compact PDF

#### Scan destinations

2,100 (single + group)  
LDAP support

### Fax specification (optional)

#### Fax standard

Super G3

#### Fax resolution

Max. 600 x 600 dpi (ultrafine)

#### Fax compression

MH, MR, MMH, JBIG

#### Fax baud rate

Up to 33.6 Kbps

#### Fax destinations

1,000 (single + group)

#### Fax functions

Polling, time shift,  
eMail reroute,  
receipt to confidential box,  
PC fax

### System specification

#### System memory

1,024 MB

#### System hard disk

40 GB

#### Automatic document feeder

Up to 100 originals

#### Printable size

A6–A3 full bleed  
Customised paper sizes

#### Paper weight

64–256 g/m<sup>2</sup>

#### Paper input capacity

Standard 850 sheets  
Maximum 3,350 sheets

#### Output capacity

Up to 1,250 sheets

#### Automatic duplexing

A5–A3 full bleed  
64–256 g/m<sup>2</sup>

#### Power consumption

220–240 V / 50Hz  
1.5 KW or less

#### System dimension (W x D x H mm)

653 x 755 x 771

#### System weight

Approx. 94 kg

### System features

#### Security

ISO15408 EAL3

#### Accounting

1,000 user accounts  
Active directory support  
(username + password)  
User functions access definable

#### Software

PageScope NetCare, PageScope Cabinet  
PageScope NetSetup  
PageScope Data Administrator  
PageScope Box Utility  
PageScope JobSpooler

All specifications relating to paper capacity refer to A4-size paper of 80 g/m<sup>2</sup> quality.

All specifications relating to scanning, copying or printing speeds refer to A4-size paper that is scanned, copied or printed crosswise in multipage, simplex mode.

The memory capacities listed refer to A4-size paper with the toner coverage detailed in the respective footnote.

Some of the product illustrations contain optional accessories.

Konica Minolta does not warrant that any prices or specifications mentioned will be error-free.

Specifications are subject to change without notice.

Microsoft, Windows and the Windows logo are trademarks, or registered trademarks, of Microsoft Corporation in the United States and/or other countries.

All other brand and product names may be registered trademarks or trademarks of their respective holders and are hereby acknowledged.

Printed in UK.

Your Konica Minolta Business Solutions Partner:



Konica Minolta  
Business Solutions (UK) Ltd

#### Dealer Operations

Precedent Drive, Rooksley,  
Milton Keynes, MK13 8HF  
Tel: 01908 200400  
Fax: 01908 200378  
www.konicaminolta.co.uk